

# GREAVES BOMAG

## Single Drum Vibratory Soil Compactors



GREAVES  
SINCE 1859



- 10 to 11 Ton class Vibratory Soil Compactors
- High productivity
- High Static Linear Load
- Optimum Combination of dual amplitude and frequency
- Highest Drum Shell Thickness
- Low Operation and Maintenance cost

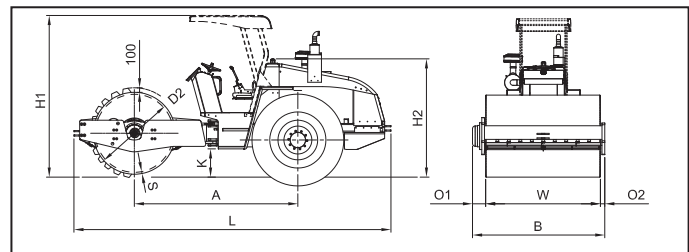
# Greaves Single-Drum Vibratory Soil Compactors

		BW212	BW212D	BW212 PD
<b>TECHNICAL DATA</b>				
<b>WEIGHTS</b>				
Operating weight(with canopy)	kg	10495	11125	11198
Axle load (Front)	kg	6215	6500	6201
Axle load (Rear)	kg	4280	4625	4997
Static linear load	kg/cm	29.6	30.9	-
<b>DIMENSIONS</b>				
Rolling width	mm	2100	2100	2100
Drum diameter	mm	1500	1500	1500
Drum shell thickness	mm	36	36	25
Wheel base	mm	3000	3000	3000
Ground clearance	mm	400	400	400
Turning radius inside	mm	4560	4560	4560
Canopy		Std Sun Canopy	ROPS / FOPS Canopy	ROPS / FOPS Canopy
<b>DRIVING CHARACTERISTICS</b>				
Speed range1	km/hr	0-10.4	0-5.8	0-5.8
Speed range2	km/hr	0-18.0	0-10	-
Gradeability	%	30	37	37
<b>DRIVE</b>				
Engine make & model		Kirloskar HA 694	Kirloskar HA 694	Kirloskar HA 694
H.P. @ R.P.M. - DIN 6271 B		112 at 2500	112 at 2500	112 at 2500
Drive system		Hydrostatic	Hydrostatic	Hydrostatic
Drive		Rear	Rear & Drum	Rear & Drum
Size of Tyres		23.1,18-26,8 PR	23.1,18-26,8 PR	23.1,18-26,8 PR
<b>BRAKES</b>				
Service brake		Hydrostatic	Hydrostatic	Hydrostatic
Parking brake		Hydromech	Hydromech	Hydromech
<b>STEERING</b>				
Steering system		Articulated	Articulated	Articulated
Steering method		Hydrostatic	Hydrostatic	Hydrostatic
Steering angle		30	30	30
Oscillation angle		8	8	8
<b>COMPACTION CHARACTERISTICS</b>				
Vibratory Drive system		<b>Hydrostatic</b>	<b>Hydrostatic</b>	<b>Hydrostatic</b>
Frequency	Hz(VPM) Dual	31 (1860) 40 (2400)	31 (1860) 40 (2400)	30 (1800)
Amplitude	mm (Dual)	1.67 0.82	1.67 0.82	1.5
Centrifugal force	kg (Dual)	25000 19600	25000 19600	23000
Total applied force(drum)	kg	31215 25815	31500 26100	29201
Dynamic linear load front	kg/cm	148.6 122.9	150.0 124.3	-
Number of Padfeet				150
Area of Padfoot	cm <sup>2</sup>			143
Surface load	kg/cm <sup>2</sup>			43.40

## Standard Equipment

- Hourmeter
- Horn
- Articulation locking device
- Indicators for:
  - Engine oil pressure
  - Engine temperature
- Hydraulic Oil Level Gauge
- Diesel Oil level Gauge
- Drum Scrapers
- Cushioned seat

- Towhooks
- Tool box
- Sun Canopy
- Working lights
- Parking Brake
- Optional Equipment**
- Cabin



## Dimensions in mm BW 212-2 (2A) / BW 212 D-2 (2A) / BW 212-PD-2

A	B	D2	H <sub>1</sub>	H <sub>2</sub>	K	L	O <sub>1</sub>	O <sub>2</sub>	S	W
3000	2355	1500	2950	2260	400	5760	170	85	36	2100
										25 For BW 212-PD-2

Note: Tolerance on weights  $\pm 1\%$  over indicated values

## Greaves Cotton Limited

Construction Equipment Division

**Construction Equipment Division:** 'Wavoo Mansion', 6th Floor No. 48 (old No. 39), Rajaji Salai, Chennai 600 001, India. Ph.: 044-25255200, 25230482 Fax: 044-25224557, Email: sales.ced@greavesmail.com



**GREAVES**  
SINCE 1859

**MUMBAI:** Corporate Park-II, 4th Floor, Sion Trombay Road, Chembur, Mumbai 400 071 Ph.: 022-25264646 Fax : 022-25262622 / 25264800 **NEW DELHI:** Express Building Annexe, 9-10, Bahadur Shah Zafar Marg, New Delhi 110 002 Ph.: 011-23730554, 23317349 Fax: 011-23359782 **KOLKATA:** Thapar House, 25, Brabourne Road, P. B. No. 702, Kolkata 700 001 Ph.: 033-40120900, 40120931 Fax: 033-22424325 **AHMEDABAD:** Ph.: 079-26580148 **RANCHI:** Ph.: 0651-2530900, 2530998 **BANGALORE:** Ph.: 080-22265178 **HYDERABAD:** Ph.: 040-23314037 **KOCHI:** Ph.: 0484-2359235 **LUCKNOW:** (0) 96514 91259 **JAIPUR:** (0) 96104 50505 **GUWAHATI:** (0) 97060 95500 **PUNE:** (0) 98239 90848 **NAGPUR:** (0) 95455 17400 **CHANDIGARH:** (0) 92165 81581 **BHUBANESWAR:** (0) 96745 55222 **COIMBATORE:** (0) 89399 32007

www.greaves cotton.com

Note : Due to continuous development and product improvement, specifications / details in this leaflet are subject to change without prior notice